

**CONCEPT
PAINTS®**

Driven by Innovation

DIY RANGE

AUTOMOTIVE & INDUSTRIAL



A family
owned
Australian
business



CONTENTS

DIY RANGE AEROSOLS



AEROSOLS

| | |
|--------------------|-------|
| STEP - PREP | 3 |
| STEP 01 - PRIME | 4 - 5 |
| STEP 02 - TOP COAT | 6 - 7 |
| STEP - PROTECT | 8 - 9 |



PRIMERS

| | |
|------------|----|
| AUTOMOTIVE | 10 |
| INDUSTRIAL | 11 |



TOP COATS

| | |
|------------|---------|
| AUTOMOTIVE | 12 - 13 |
| INDUSTRIAL | 14 - 15 |



TOP COATS - CLEARS

| | |
|------------|---------|
| AUTOMOTIVE | 16 - 17 |
|------------|---------|



TOP COATS - CHROME

| | |
|------------|---------|
| AUTOMOTIVE | 18 - 19 |
|------------|---------|



THINNERS

| | |
|------------|----|
| AUTOMOTIVE | 20 |
| INDUSTRIAL | 21 |



HARDENERS, ADDITIVES & CLEANERS

| | |
|-------------------------|---------|
| AUTOMOTIVE & INDUSTRIAL | 22 - 23 |
|-------------------------|---------|



BODY REPAIR

| | |
|------------|---------|
| AUTOMOTIVE | 24 - 25 |
|------------|---------|



HYGIENE

| | |
|-----------|----|
| SANITISER | 26 |
|-----------|----|

STEP PREP - PREPARE SURFACE

GET YOUR FOUNDATION CORRECTLY SETUP TO ACHIEVE A PERFECT PAINT JOB.

A quality paint job is 95 percent preparation. What goes on prior to applying your colour is far more important than spraying the paint itself. Normally, less than 1 percent of your time is spent spraying colour or clears.



PAINT STRIPPER

A highly effective, environmentally safe formula that removes paint and varnishes from a variety of automotive and other substrates including, brick, concrete, and metal. The sprayable gel-like paint stripper will also adhere to vertical surfaces and becomes more effective the longer this product is left on the surface.

Size: 300g

Code:
AU0489000.300

PROPERTIES

- Ready for use
- Effective sprayable Paint Stripper
- Suitable for both 1K & 2K Paints
- Fast active ingredients
- Suitable for professional or DIY users

LARGE PROJECT?

PICK ME UP IN 500ML,
1LT OR 4 LT

Code:
500 ML - AU04890000.50
1 LT - AU048900000001
4 LT - AU048900000004



Wax & Grease Remover
Size: 400g

Code:
AU0369000.400



Degreaser
Size: 400g

Code:
AU0449000.400



**Rust Converter
Primer & Sealer**
Size: 400g

Code:
IN0259000.400

DIY RANGE AEROSOLS

STEP
01

STEP 01 - PRIME

WHEN APPLYING THE RIGHT PRODUCT YOU ALWAYS GET A PERFECT AUTO BODY REPAIR.

Auto body repairs takes some skill for it to be done properly and you need to incorporate the correct products to undertake a successful repair. It is extremely important, one takes their time and familiarise themselves with the different how-to in achieving a trade like auto body repair job.



Cold Gal Zinc Coat
Size: 400g

Code:
IN9206200.400

85% zinc



Silver Gal
Size: 400g

Code:
IN9608000.400

Silver



Acrylic Primer Surfacer
Size: 400g

Code:
AU9516200.400



Spray Putty
Size: 400g

Code:
AU1011050.400



Bumper Primer
Size: 400g

Code:
AU9526200.400



Plastic Primer
Size: 400g

Code:
AU1649000.400



Primer Filler
Size: 400g

Code:
AU9586200.400



Grey Etch Primer
Size: 400g

Code:
AU9506200.400

Grey



Structural Primer Grey
Size: 400g

Code:
IN9236200.400

Grey



Structural Primer Red Oxide
Size: 400g

Code:
IN9233081.400

Red Oxide



Fade Out Thinner
Size: 400g

Code:
AU8059200.400



Black Etch Primer
Size: 400g

Code:
AU9507000.400

Black



Spray Adhesive
Size: 350g

Code:
AU9109000.350



Rubberised Undercoat
Size: 400g

Code:
AU4687019.400



PRIMER TIP:
BEFORE YOU
PRIME, MAKE SURE
YOUR SURFACE
IS PROPERLY
PREPARED

DIY RANGE AEROSOLS

STEP
02

STEP 02 - TOP COATS

A GREAT COLOUR MATCH MAKES YOUR CAR LOOK AS GOOD AS NEW.

Choosing the right auto paint colours can significantly change the look of your car. When choosing your auto paint colour, you have to use the right paint technology because it makes it easy to achieve an outstanding paint job every time.



CP Fillable Aerosol Can
Size: 300g

Code:
AU9018999.300

Tintable



S/C Fillable Aerosol Can
Size: 300g

Code:
AU9028999.300

Tintable

Top
Seller



High Temp Fillable Can
Size: 300g

Code:
AU9569000.300

Tintable

Top
Seller



Acrylic Wheel Silver
Size: 400g

Code:
AU9218000.400

Silver



Acrylic Hi Opacity White
Size: 400g

Code:
AU9536000.400

White



GMH Black
Size: 400g

Code:
AU9547000.400

Black



Jet Acrylic Black
Size: 400g

Code:
AU9537000.400

Black



Acrylic Top Coat Clear
Size: 400g

Code:
AU9539000.400



Super Gloss Clear
Size: 400g

Code:
AU9559000.400

Top
Seller



Acrylic Satin Black
Size: 400g

Code:
AU9537002.400

Black



Acrylic Matt Black
Size: 400g

Code:
AU9537001.400

Black



469 Body Deadener Shutz
Size: 1 LT

Code:
AU46970190001

Black



Stone Guard Shutz
Size: 1 LT

Code:
AU46870190001

Black

SCHUTZ & BRUSHABLE RANGE



PREFER PAINTING?
PICK ME UP IN 1 LT OR 4 LT



Code:
1 LT - AU46970390001
4 LT - AU46970390004

Also available in sprayable



Code:
4 LT - AU46970390004

STEP **PROTECT** - *SURFACE PROTECTION*

A GREAT PAINT JOB IS SUPPORTED BY THE RIGHT PROTECTIVE PRODUCTS.

Protect against rust forming in hard to reach cracks, crevices and sealed panels that cannot be painted. Finally, apply your favourite Concept Paints polish, wax, buffing compound to protect and seal your completed refinished work.



Fish Oil
Size: 400g

Code:
AU9229000.400

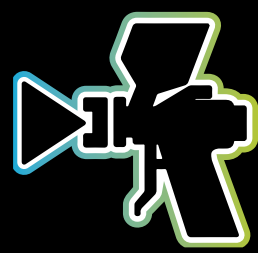


Tyre Shine
Size: 360g

Code:
AU9119000.360



DIY RANGE PRIMERS



AUTOMOTIVE PRIMERS



Acrylic Primer Grey
Size: 1 LT, 4 LT

Code:
1 LT - AU10862000001
4 LT - AU10862000004

Grey



Two in One Primer Beige
Size: 1 LT, 4 LT

Code:
1 LT - AU10761000001
4 LT - AU10761000004

Beige



2K Etch Primer Beige
Size: 1 LT, 4 LT

Code:
1 LT - AU13261000001
4 LT - AU13261000004

Beige



EP-41 Epoxy Primer Grey
Size: 1 LT, 4 LT

Code:
1 LT - AU14162000001
4 LT - AU14162000004

Grey



MS-100 2K Primer Grey
Size: 4 LT

Code:
AU13962000004

Grey



MS-100 2K Primer Kit Grey
Size: 1.25 LT (Kit)

Code:
AU13962001.25N

Grey



Plastic Primer Silver
Size: 1 LT

Code:
AU16480000001

Silver



Plastic Primer
Size: 500 ML, 1 LT

Code:
500 ML - AU164900000.50
1 LT - AU16490000001



HS 2K Primer Beige
Size: 1 LT

Code:
AU13361000001

Beige



2K Etch Catalyst
Size: 500 ML, 1 LT

Code:
500 ML - AU13292000.50
1 LT - AU13292000001



DIY RANGE PRIMERS



INDUSTRIAL PRIMERS



109 Enamel Primer Grey
Size: 1 LT, 4 LT

Code:
1 LT - IN10962000001
4 LT - IN10962000004

Grey



102 Brushable Etch Primer Grey
Size: 500 ML, 1 LT

Code:
500 ML - IN10260200.50
1 LT - IN10260200001

Grey



118 Cold Gal
Size: 1 LT, 4 LT

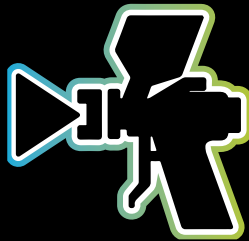
Code:
1 LT - IN11880000001
4 LT - IN11880000004



451 Silver Gal (2in1)
Size: 1 LT, 4 LT, 20LT

Code:
1 LT - IN45180000001
4 LT - IN45180000004
20 LT - IN45180000020





AUTOMOTIVE TOP COATS



MS 2K Black
Size: 1 LT, 4 LT

Code:
1 LT - AU41070000001
4 LT - AU41070000004

Black



HS 2K White (Hi-Opacity)
Size: 1 LT, 4 LT

Code:
1 LT - AU41060000001
4 LT - AU41060000004

White



402 Chassis Black
Size: 1 LT, 4 LT

Code:
AU40270040001
AU40270040004

Black



Tyre Black Glossy
Size: 1 LT

Code:
AU46670180001

Black



2K Empress Black
Size: 1 LT

Code:
AU41070030001

Black



Empress Black Basecoat
Size: 1 LT

Code:
AU41270030001

Black



GMH Black
Size: 1 LT

Code:
AU41770000001

Black



Acrylic White (Hi-Opacity)
Size: 1 LT

Code:
AU40660000001

White



MS-100 2K Black (2:1)
Size: 1 LT

Code:
AU41270030001

Black



MS-100 2K White (2:1)
Size: 1 LT

Code:
AU43960000001

White



Jet Acrylic Black
Size: 1 LT

Code:
AU40670000001

Black



1K Bumper Bar Black
Size: 1 LT

Code:
AU48170000001

Black



2K Matt Black
Size: 1 LT

Code:
AU41070010001

Black



2K Satin Black
Size: 1 LT

Code:
AU41070020001

Black



1K Bumper Bar Grey
Size: 1 LT

Code:
AU48162000001

Grey



1K Bumper Texture Black
Size: 1 LT

Code:
1 LT - AU48370000001

Black

DIY RANGE TOP COATS



HAMMERTONE RANGE



465 Hammertone Black
Size: 1 LT, 4 LT, 20LT

Code:
1 LT - IN45670000001
4 LT - IN45670000004
20 LT - IN45670000020

Black



465 Hammertone Silver
Size: 1 LT, 4 LT, 20LT

Code:
1 LT - IN45680000001
4 LT - IN45680000004
20 LT - IN45680000020

Hammertone Silver



465 Hammertone Charcoal
Size: 1 LT, 4 LT, 20LT

Code:
1 LT - IN45670380001
4 LT - IN45670380004
20 LT - IN45670380020

Charcoal



465 Hammertone Dark Blue
Size: 1 LT, 4 LT

Code:
1 LT - IN45640670001
4 LT - IN45640670004

Dark Blue



465 Hammertone Gunmetal Grey
Size: 20LT

Code:
20 LT - IN45660540020

Gunmetal Grey

INDUSTRIAL TOP COATS



402 QD Gloss Black
Size: 1 LT, 4 LT

Code:
1 LT - IN40270000001
4 LT - IN40270000004

Black



402 QD Gloss White
Size: 1 LT, 4 LT

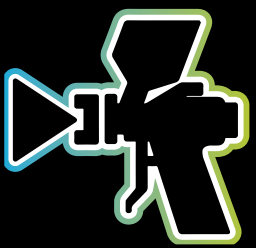
Code:
1 LT - IN40260000001
4 LT - IN40260000004

White

ALSO AVAILABLE IN THE FOLLOWING COLOURS:

- 402 QD Orange X15
- 402 QD Signal Red R13
- 204 QD PO Red
- 402 QD Sapphire Blue
- 402 QD Golden Yellow
- 402 QD Golden Yellow Y14
- 402 QD New Cat Yellow
- 402 QD Silver
- 402 QD Mid Grey N52
- 402 QD Matt Black
- 402 QD Satin Black

DIY RANGE TOP COAT



AUTOMOTIVE TOP COAT CLEARS



MS-22 2K Clear
Size: 1 LT

Code:
AU72290000001



2K Satin Clear
Size: 1 LT

Code:
AU72490020001



MS-100 2K Clear Kit
Size: 1.5 LT

Code:
AU73990001.50N



MS-100 2K Clear
Size: 4 LT

Code:
AU73990000004



2K Matt Clear
Size: 1 LT

Code:
AU72390010001



1K Premier Clear
Size: 1 LT

Code:
AU71190000001



Unique Acrylic Clear
Size: 1 LT, 4 LT

Code:
1 LT - AU70690000001
4 LT - AU70690000004

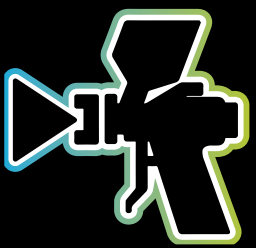


Euroflash Clear & Hardener Kit
Size: 1.43 LT

Code:
AU73690001.43N



DIY RANGE TOP COATS



AUTOMOTIVE TOP COAT CHROME



NEW S-300 MIRROR CHROME

Concept S-300 Mirror Chrome is a high performance basecoat designed for use on wheels and trim components. When used over a 2K Black it produces a highly reflective chrome effect finish.

Size: 500 ML, 1 LT

Code:
500 ML - AU41280630.50
1 LT - AU41280630001

APPLICATION:



Ready For Use (RFU)



BSB 4 Cup: 11-14 s
Ford 4 Cup: 9-12 s



Gravity feed; fluid tip 1.0 mm 0.045-0.047" 200-240 kPa pressure, 15-20 cm distance.
Suction feed; fluid tip 1.0 mm 0.045-0.047", pressure 200-240 kPa, 15-20 cm distance.



Air dry at 25°C 8 hours for Concept 2K black before applying S-300 Mirror Chrome, 30 mins for 2K black before applying S-300 Mirror Chrome



2-3 coats, 10-15 µm
0.4-0.7 mils



No flash off time required



NEW S-200 SHADOW CHROME

Concept S-200 Shadow Chrome is a high-performance basecoat designed for use on wheels and trim components. When used over a 2K Black it produces a highly reflective shadow chrome effect finish.

Size: 500 ML, 1 LT

Code:
500 ML - AU41280620.50
1 LT - AU41280620001

APPLICATION:



Ready For Use (RFU)



BSB 4 Cup: 11-14 s
Ford 4 Cup: 9-12 s



2-3 coats, 10-15 µm
0.4 - 0.7 mil



No flash off time required



Gravity feed; fluid tip 1.0 mm 0.045-0.047" 200-240 kPa pressure, 15-20 cm distance.
Suction feed; fluid tip 1.0 mm 0.045-0.047", pressure 200-240 kPa, 15-20 cm distance.



Air dry at 25°C, 8 hours for Concept 2K black before applying Shadow Chrome 30 mins for 2K black before applying S-200 Shadow Chrome

DIY RANGE THINNERS



DIY RANGE THINNERS



AUTOMOTIVE THINNERS



Acrylic Thinner
Size: 1 LT, 4 LT

Code:
1 LT - AU80292000001
4 LT - AU80292000004



808 Multi Thinner
Size: 1 LT, 4 LT

Code:
1 LT - AU80892000001
4 LT - AU80892000004



810 Retarder Thinner
Size: 1 LT

Code:
AU81092000001



NM Reducer
Size: 1 LT, 4 LT

Code:
1 LT - AU80992000001
4 LT - AU80992000004



NEW

Wax & Grease Remover
Size: 500 ML

Code:
AU03690000.50



NEW

801 Acetone
Size: 500 ML

Code:
AU80190000.50



2K Universal Thinner
Size: 1 LT, 4 LT

Code:
1 LT - AU83292000001
4 LT - AU83292000004



INDUSTRIAL THINNERS



804 Enamel Thinner
Size: 1 LT, 4 LT

Code:
1 LT - IN80492000001
4 LT - IN80492000004



NEW

035 Gunwash
Size: 4 LT

Code:
4 LT - AU03590000004



812 Brushable Enamel Thinner
Size: 1 LT

Code:
1 LT - IN81292000001



DIY RANGE HARDENERS, ADDITIVES & CLEANERS



HARDENERS



MS Uni Hardener Normal
Size: 500 ML

Code:
AU21392000.50



MS Uni Hardener Fast
Size: 500 ML

Code:
AU21393000.50



Primer Hardener
Size: 250 ML

Code:
AU23392000.25



Primer Hardener Fast
Size: 250 ML

Code:
AU23393000.25



MS-22 Hardener
Size: 500 ML

Code:
AU72292000.50



MS-22 Hardener Fast
Size: 500 ML

Code:
AU72293000.50



EP-41 Hardener
Size: 250 ML, 1 LT

Code:
250 ML - AU14192000.25
1 LT - AU14192000001



ADDITIVES



185 Adhesion Promoter (C.A.P.)
Size: 1 LT, 4 LT

Code:
1 LT - AU18590000001
4 LT - AU18590000004



1K Flex Additive
Size: 500 ML, 1 LT

Code:
500 ML - AU02690000.50
1 LT - AU02690000001



499 Uni Flattening Base
Size: 1 LT

Code:
1 LT - AU49990030001



CLEANERS



025 Rust Converter
Size: 500 ML, 1 LT

Code:
500 ML - AU02590000.50
1 LT - AU02590000001



Antistatic Cleaner
Size: 1 LT

Code:
AU02890000001



Paint Stripper
Size: 500 ML, 1 LT, 4 LT

Code:
500 ML - AU04890000.50
1 LT - AU04890000001
4 LT - AU04890000004



DIY RANGE BODY REPAIR



AUTOMOTIVE BODY REPAIR



NEW BODY FILLER LIGHTWEIGHT

Concept Bodyfiller Lightweight is a two-pack polyester based product designed to fill scratches, pinholes and sanding marks. It is a smooth paste, which can be easily spread and easier to sand to provide the ideal surface for painting.

Size: 500g, 1kg, 2kg, 3kg

Code:
500g - AU19260000.50
1kg - AU19260000001
2kg - AU19260000002
3kg - AU19260000003

PROPERTIES:

- Superior performance when compared to other similar products
- Fast drying/curing
- Fine particle size giving a very fine and smooth finish
- Easy to apply with excellent sag resistance
- Easy to sand with reduced paper clogging



NEW FIBREGLASS REPAIR KIT

Concepts' Fibre Glass Repair Kit is an excellent product to be used for repairing, surfboards, cars, boats, and caravans. This product has great adhesion on fibreglass, wood and steel.

Size: 250 ML Kit

Code:
250 ML - AU19389990.25N

KIT INCLUDES:

- 250ml Polyester resin
- 260ml Measuring cup
- 20g Catalyst (Hardener)
- 2 x Stirring sticks
- Fibreglass matting (250mm x 1000mm)
- 1 x Set of gloves
- 1 x Paint brush

PROPERTIES:

- Easy to use
- Great Adhesion
- Repairs a wide range of surfaces including: Fibreglass, wood and steel
- Suitable for repairing surfboards, cars, boats and caravans



DIY RANGE HYGIENE



ABOUT US



NEW

051 HAND SANITISER

Unlike some hand sanitisers on the market, our formula contains 75% Isopropyl alcohol and complies with the WHO standard. Grab your Concept Paints Hand Sanitiser today!

Size: 5 LT

Code:
5LT - IN05190000005

PROPERTIES:

- 75% Isopropyl Alcohol
- Gentle wash free formula
- Made in Australia

**CONCEPT
PAINTS®**

Driven by Innovation

“WE ARE AN INNOVATIVE AND DYNAMIC, FAMILY OWNED AUSTRALIAN BUSINESS CREATING WORLD-CLASS, AUTOMOTIVE AND INDUSTRIAL COATING SOLUTIONS THAT EXCEED OUR CUSTOMER’S EXPECTATIONS”



NOTES:



Driven by Innovation

DIY RANGE *AUTOMOTIVE & INDUSTRIAL*

26 - 30 Charles St, St Marys NSW 2760 Australia

P: +61 2 9673 2555 F: +61 2 9623 1918

office@conceptpaints.com.au

www.conceptpaints.com.au



@conceptpaints



A family
owned
Australian
business